

4

3

2

1

NOTES: UNLESS OTHERWISE SPECIFIED

- 1. INTERPRET DRAWING IN ACCORDANCE WITH ANSI Y14.5-1994.
- 2. PART SUPPLIED ON A CONTINUOUS REEL AS SHOWN, QTY OF TABS PER REEL 5,000 ± 15%. FEEDER COMPATIBLE SPLICES PERMITTED, 2 SPLICES MAX PER REEL.
- 3. COMPLIANT TIPS ARE BARE AT CUT-OFF.
- 4. .010 [0.25] MAX RADII AND FILLET.
- 5. ASSEMBLY DIMENSIONS ARE MEASURED IN A RESTRAINED STATE.
- 6. HEADER SIZES CUT FROM A REEL ARE PACKAGED IN BULK. SEE TABLE FOR QTY.
- 7. CONSULT AUTOSPlice FOR INSERTION TOOLING.
- 8. RECOMMENDED .062" THICK PC BOARD HOLE:
 - DRILLED HOLE - Ø .0635±.0010 [1.613±0.025]
 - COPPER PLATED HOLE - Ø .0595±.0020 [1.511±0.051]
 - TIN/LEAD PLATED HOLE - Ø .0585±.0030 [1.486±0.076]
 - DRILLED HOLE - Ø .0635±.0010 [1.613±0.025]
 - COPPER PLATED HOLE - Ø .0595±.0020 [1.511±0.051]
 - NICKEL PLATED HOLE - Ø .0580±.0020 [1.473±0.051]
 - GOLD PLATED HOLE - Ø .0580±.0020 [1.473±0.051]

A/S PART NO.	TRW PART NO.	TOTAL NO. OF TABS	"Y" ±.020 [±0.50]	QTY PER PACKAGE Δ
23-1066T00A1AA	154205-1	REELED	-	5,000 ±15%
23-1066T05A1AA	154206-105	5	.689 [17.50]	500 ±15%
23-1066T04A1AA	154206-104	4	.551 [14.00]	
23-1066T06A1AA	154206-106	6	.827 [21.00]	

REV	REVISION RECORD	ECN	BY	APVD	DATE
X2	.0319 WAS .0315 THK	-	PVB	PVB	11/30/04
A	REL TO PRODUCTION PER EWR 104011	503701	BILL	PVB	03/22/05
B	ADDED 23-1066T06A1AA PER EWR 104698	504064	BILL	PVB	08/22/05
C	REVISED TO GENERIC, PER EWR 106798	505966	KR	PVB	10/18/10

PART NO. / ORDERING CODE

23-1066 T 00 □ □ A A

TYPE
1 ROW .138 [3.50] CENTERS

RECT. TAB COMPLIANT

.0319 X .059 [0.81] [1.50]

TOTAL NO. OF POS.

FINISH
.000040"-.000120" [1.02-3.05 MICRONS] BRIGHT TIN/LEAD (90/10) OVER .000050" [1.27 MICRONS] MIN. NICKEL

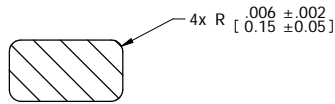
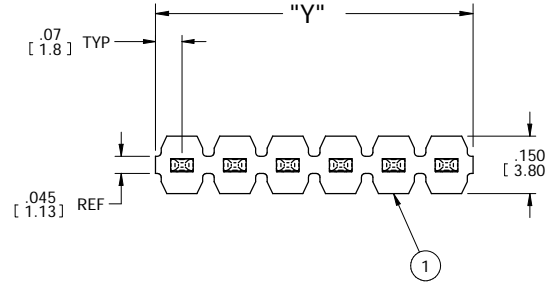
DIMENSIONS

CODE	"Z"
A1	.764 [19.40]

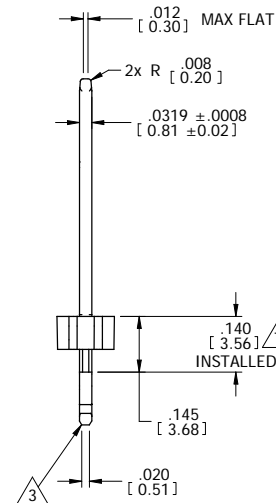
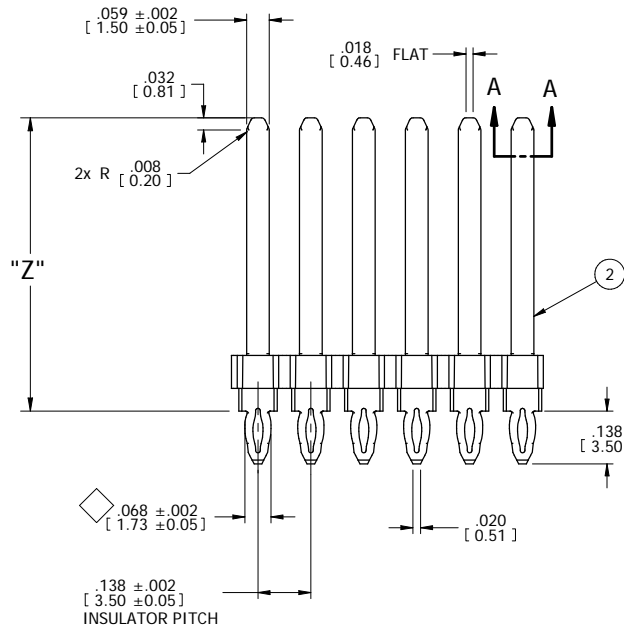
ADDITIONAL TAB SIZES & LENGTHS CAN BE MADE UPON REQUEST

2 00 = CONTINUOUS REEL

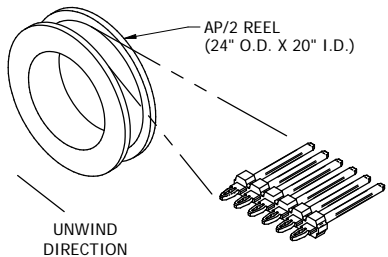
3 CUT HEADER SIZES: 2 TO 20 POSITIONS BULK PACKAGED IN POLYBAG (SEE TABLE FOR QTY)



SECTION A-A SCALE : 20:1



- MATERIAL:**
- 1 **INSULATOR:** THERMOPLASTIC POLYESTER, FLAMMABILITY RATED: UL 94HB COLOR: BLACK
 - 2 **PIN:** PHOSPHOR BRONZE
- FINISH:** SEE PART NO. / ORDERING CODE



REELED HEADER ORIENTATION

CONFIDENTIAL CUSTOMER DRAWING

TOLERANCES UNLESS OTHERWISE SPECIFIED DIMENSIONS IN INCHES		Autosplice, Inc. 10121 Barnes Canyon Rd. San Diego, CA 92121-2725 858.535.0077	
DECIMAL: .XX = ±.01 [X.X] = ±0.3 [X.XX] = ±.005 [X.XXX] = ±0.13	ANGULAR: ± 5°	THIRD ANGLE PROJECTION	ENGINEERED BY: Pete PVB DATE: 8/07/04
The drawing and the information set forth hereon are the property of Autosplice, Inc. and are to be held in trust and confidence. Publication, disclosure, or use for any purpose not expressly authorizing in writing by Autosplice, Inc. is prohibited.		TITLE: AUTOHEADER™, 1 ROW, 3.5mm CTRS	
SIZE: C	FORM NO: OAE89	ORDER NUMBER: C23-1066	REVISION: C
SCALE: 8:1		ECO NO: C23-1066	ISSUE NO: 23-1066-030
DRAWING CHARACTERISTIC		SHEET 1 OF 1	

4

3

2

1