

NOTES: UNLESS OTHERWISE SPECIFIED

1. INTERPRET DRAWING IN ACCORDANCE WITH ASME Y14.5-1994.
2. 5,000 PINS APPROX. PER AUTOHEADER™ REEL. FEEDER COMPATIBLE SPLICES PERMITTED, 2 SPLICES MAX. PER REEL.
3. HEADERS CAN BE SUPPLIED CUT TO LENGTH AS INDICATED. AUTOTRIMMER™ CUT-TO-LENGTH MACHINE ORDER MODEL ATR-1000 MACHINE TO CUT HEADERS FROM REEL TO LENGTHS FROM 2-10 POSITIONS.
4. PERPENDICULARITY TOLERANCE IS A PER SIDE VALUE.
5. DIMENSIONS INDICATED TO BE MEASURED WITH INSULATOR RESTRAINED FLAT.

| PART NUMBER | TOTAL NO. OF PINS | QTY PER PACKAGE | "W" |
|------------------|-------------------|-----------------|--------------|
| 23-1069F00A1[[]] | REELED | 5,000 ±15% | - |
| 23-1069F00A2[[]] | REELED | 5,000 ±15% | - |
| 23-1069F00A3[[]] | REELED | 5,000 ±15% | - |
| 23-1069F02A1[[]] | 2 | 750 | .312 [7.92] |
| 23-1069F03A1[[]] | 3 | 750 | .468 [11.89] |
| 23-1069F06A3[[]] | 6 | 500 | .936 [23.77] |

| REV | REVISION RECORD | ECN | BY | APVD | DATE |
|-----|--------------------------------|--------|------|------|----------|
| X1 | PROPOSAL PER EWR 106391 | - | HR | PVB | 02/20/09 |
| B | REVISE TOLERANCE CDR 301941 | 504882 | HR | PVB | 02/26/07 |
| C | ADDED P/N A2[[]] PER EWR106391 | 505700 | Pete | PVB | 05/13/09 |
| D | ADDED P/N A3[[]] PER EWR106486 | 505842 | Pete | PVB | 08/21/09 |

PART NO. / ORDERING CODE

23-1069 F [[]] X

TYPE: 1 ROW, .156 CENTERS [3.96]

VARIATION: OMIT FOR STD

FINISH: AA, TT

PIN SIZE/SHAPE: F = .045 SQ [1.14]

CODE SIZE: F = .045 SQ [1.14]

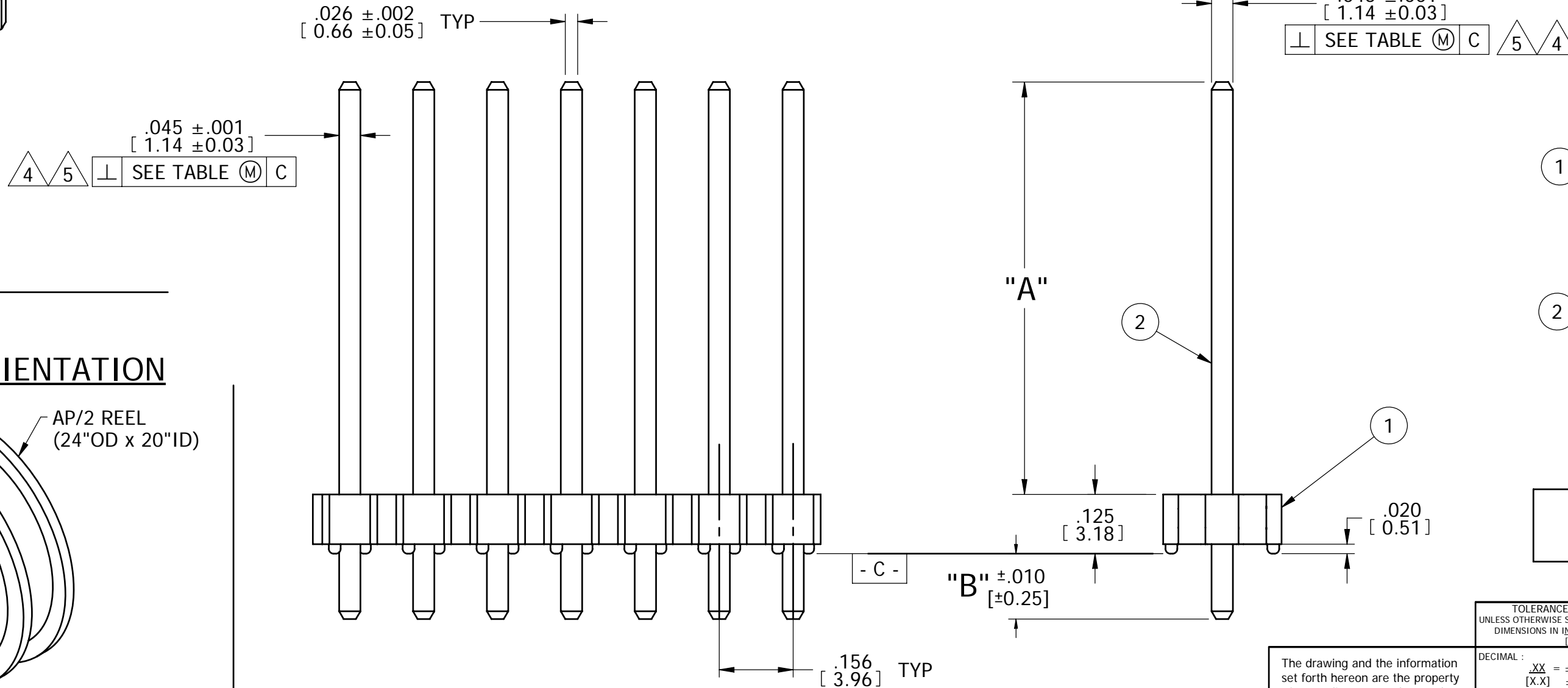
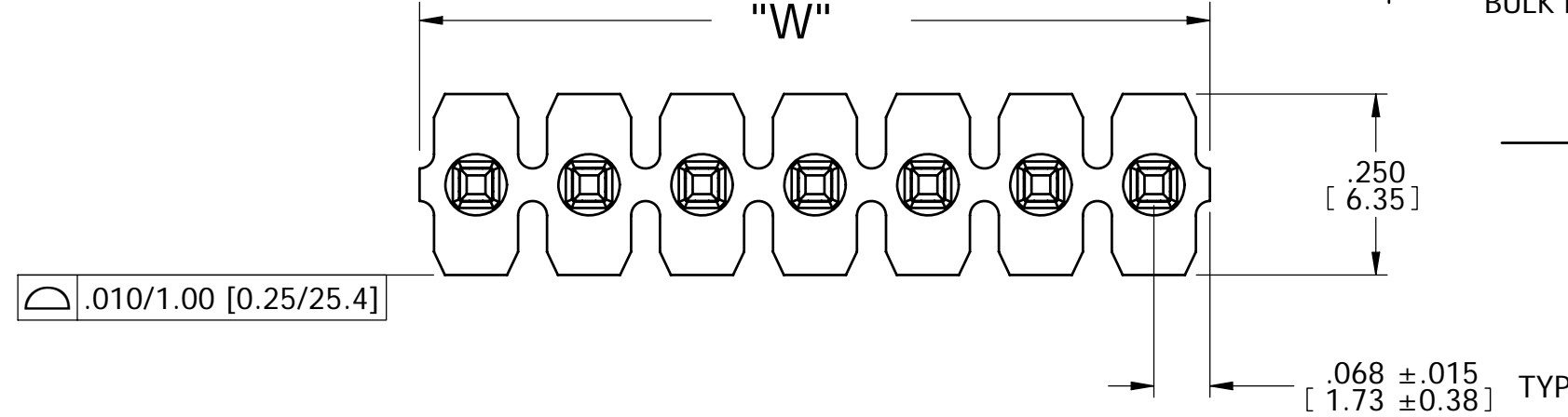
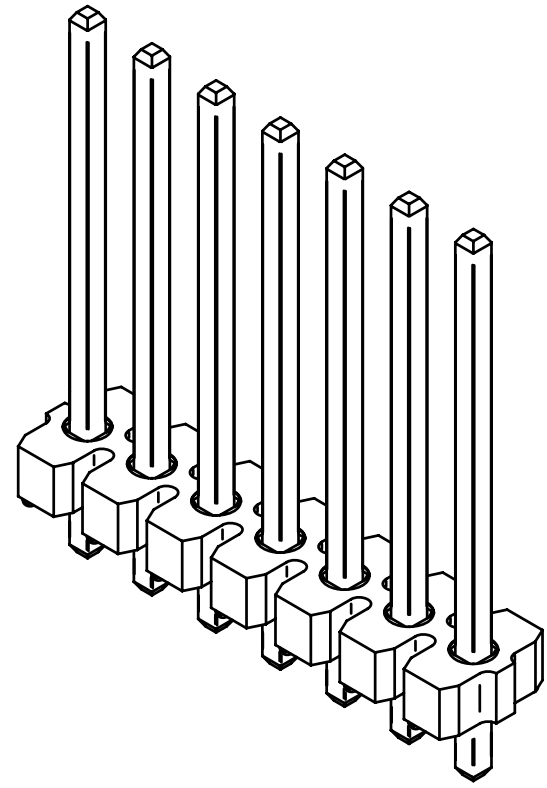
TOTAL NO. OF POS.: 2 = CONTINUOUS REEL, 3 = CUT HEADERS SIZES: 2-10 POSITIONS BULK PACKAGED

DIMENSIONS: A, B, PERPENDICULARITY

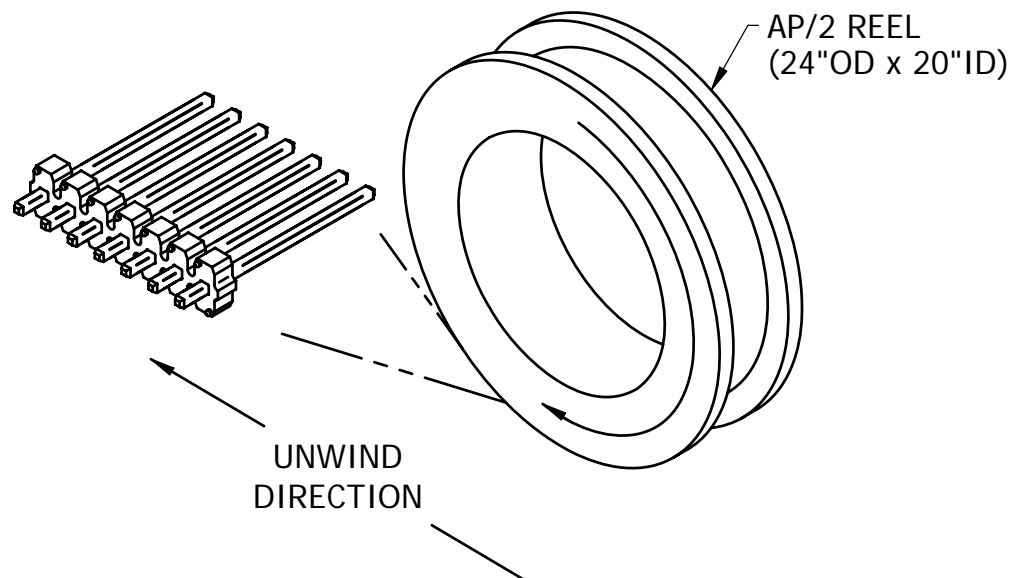
| CODE | DESCRIPTION |
|------|--|
| AA | .000120" [3.05 MICRONS] MIN. MATTE TIN/LEAD OVER .000050" [1.27 MICRONS] MIN Ni |
| TT | .000160" [4.06 MICRONS] MIN. MATTE TIN (Pb FREE) OVER .000080" [2.03 MICRONS] MIN Ni |

| CODE | A | B ±.010 [±0.25] | PERPENDICULARITY |
|------|--------------|-----------------|------------------|
| A1 | .430 [10.92] | .138 [3.50] | .010 [0.25] |
| A2 | .575 [14.61] | .125 [3.18] | .015 [0.38] |
| A3 | .540 [13.71] | .138 [3.50] | .010 [0.25] |

CUSTOM DIMENSIONS ARE AVAILABLE UPON REQUEST TO FACTORY.



2 REELED HEADER ORIENTATION



MATERIAL:

1 INSULATOR:

HIGH TEMPERATURE THERMOPLASTIC
FLAMMABILITY RATED: UL 94V-0
COLOR: BLACK

2 PIN: BRASS, C26000

FINISH:

SEE P/N ORDERING CODE
(PIN TIPS BARE AT CUT-OFF)

CUSTOMER DRAWING

The drawing and the information set forth hereon are the property of Autossplice, Inc. and are to be held in trust and confidence. Publication, disclosure, or use for any purpose not expressly authorizing in writing by Autossplice, Inc. is prohibited.

| | | | | | |
|---|---|------------------------------|--|---------------------------------|---|
| <p>TOLERANCES UNLESS OTHERWISE SPECIFIED DIMENSIONS IN INCHES (mm)</p> <p>DECIMAL: .XX = ± .01 [X.X] = ± [0.25] XXX = ± .005 [X.XX] = ± [0.13]</p> <p>ANGULAR: ± 5°</p> <p>DENOTES SPECIAL CHARACTERISTIC</p> | | | <p>Autossplice, Inc. 10121 Barnes Canyon Rd. San Diego, CA 92121-2725 858-535-0077</p> | | |
| | <p>THIRD ANGLE PROJECTION</p> | <p>DRAWN BY</p> <p>Pete</p> | <p>DATE</p> <p>07/21/03</p> | <p>ENGINEERED BY</p> <p>PVB</p> | <p>DATE</p> <p>07/21/03</p> |
| | <p>TITLE: AUTOHEADER 1 ROW .156 CTRS</p> | | | | |
| | <p>SIZE: C</p> <p>SCALE: 4:1</p> | <p>FSCM NO:</p> <p>OAE89</p> | <p>DRAWING NUMBER:</p> <p>C23-1069[[]]</p> | <p>REVISION:</p> <p>D</p> | <p>MODEL NO:</p> <p>23-1069.asm</p> <p>SHEET 1 OF 1</p> |